

THE **ADVANCED** PORTABLE TWO-WAY VOICE INTERCOM



- CLEAR CONTINUOUS SOUND**
- 100' SOUND PROJECTION\***
- EASY TO USE & DEPLOY**
- RUGGED CONSTRUCTION**
- AMPLIFIED MIC SENSITIVITY**
- SINGLE SYSTEM JACK**

The Responder 5<sup>TM</sup> is an extension PA/Speaker and microphone for the Rescom<sup>®</sup> Hard line communication system. Simply connect the Responder 5<sup>TM</sup> to the Rescom<sup>®</sup> Modular System, to provide local monitoring of communications on the system. The amplified microphone is activated only when it is needed by pushing the PTT button, eliminating the need for headsets - offering continuous communication for 100' or more!

The Responder 5<sup>TM</sup> contains its own rechargeable batteries, using the same convenient input jack for both communication and charging.

With a rugged water resistant construction, protected PTT button and solid mounting handles, this unit assists in team based work environments and emergency situations.

\*sound projection effected by direction of horn, obstructions and surrounding noise levels.



Responder 5<sup>TM</sup> is pending Intrinsic Safety ratings. Rescom<sup>®</sup> Modular<sup>TM</sup> is an intrinsically safe system, but will not be rated intrinsically safe when connected to unrated products.

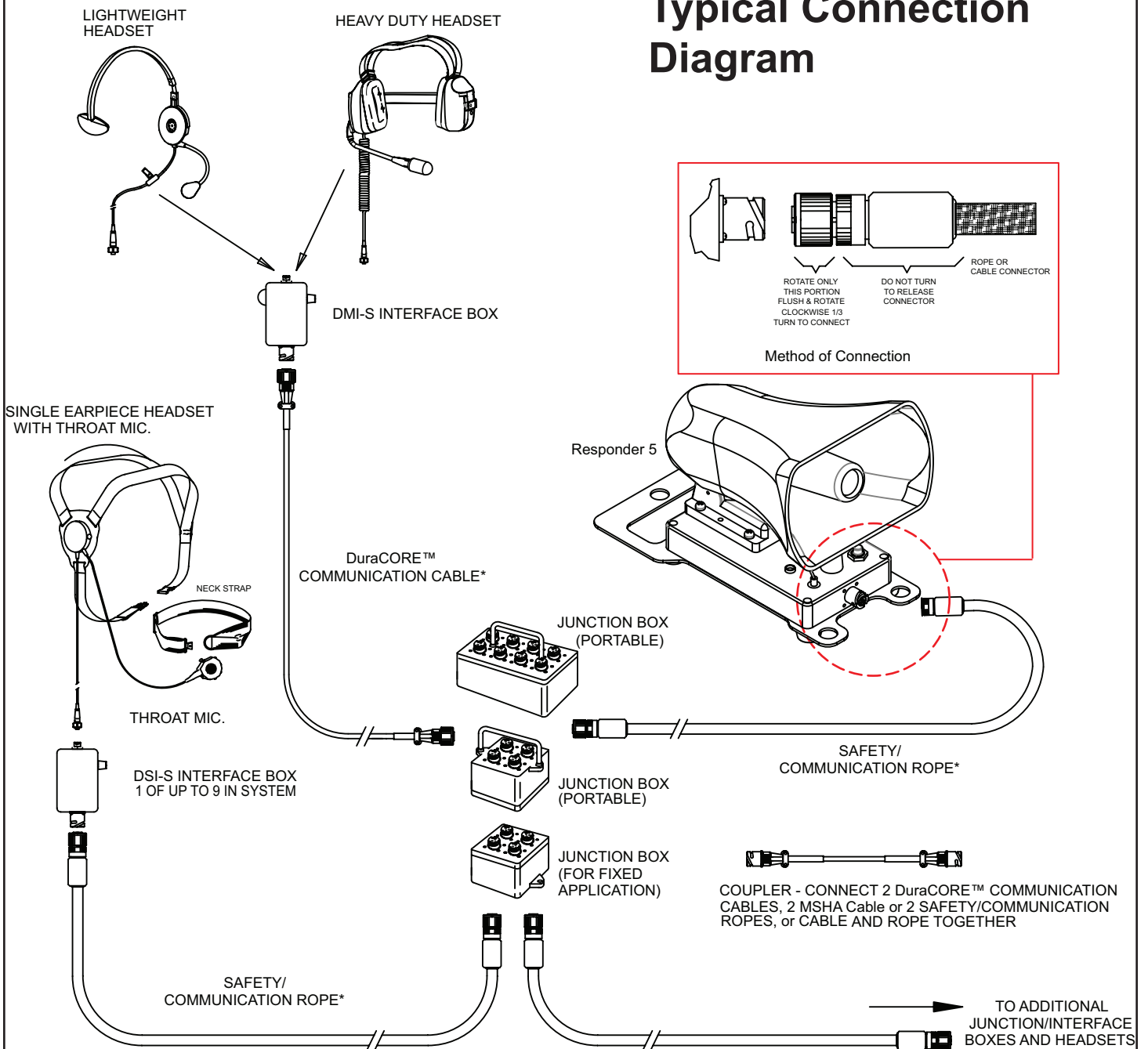
- 1. Power Indicator Light**
- 2. Power Switch**
- 3. Volume control**  
Sets the overall audio level to the speaker.
- 4. Charging Indicator Light**  
Illuminates to show battery is in charge mode.

- 5. Push-to-talk Button**  
Push this button to activate the built-in microphone.
- 6. Connection Jack**  
Single twist connection for charging and system operation. Secures cable at the front of the unit for simplicity and safety.



Rescom<sup>®</sup> Modular<sup>TM</sup> 5 man system

# Typical Connection Diagram



\*Indicates measurement which varies based on customer needs up to 1500 ft

For more information on any of these products, contact Rescom Sales Inc.