



# IP ADVANCED RADIO SYSTEM

IP Communication Terminal

**IP100H**

Remote Communicator

**IP100FS**

Controller

**IP1000C**

## Full-Duplex Communication That Works Over a Wireless LAN and IP Networks\*

- Easy system to set up and use
- Up to 100 users can communicate at the same time
- Encryption provides extra security
- Range is only restricted by your IP network coverage
- No license fee required, no call charges



\* Requires either HM-153LS, HM-166LS, HS-102 with OPC-2359 or HS-85 with OPC-2144 for full-duplex operation.

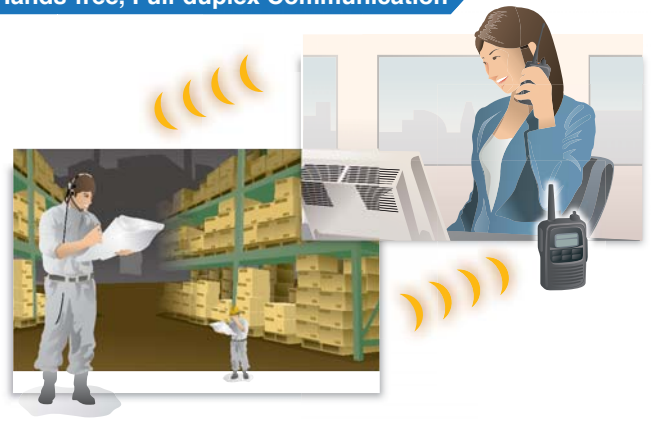
# Wireless LAN System Extends Your Communication Coverage.

## Individual, Group or Area Communication



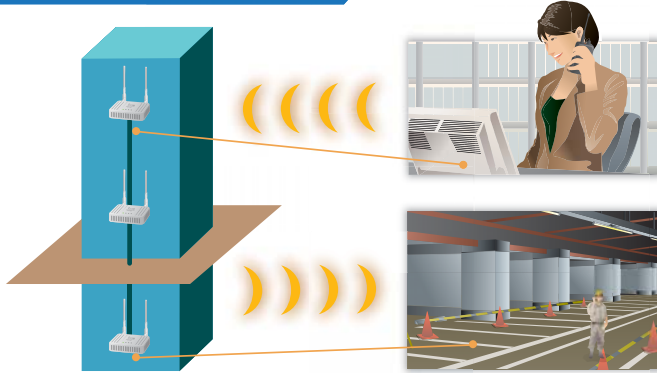
Staff spread across an extended site, such as a hotel, can communicate seamlessly.

## Hands-free, Full-duplex Communication



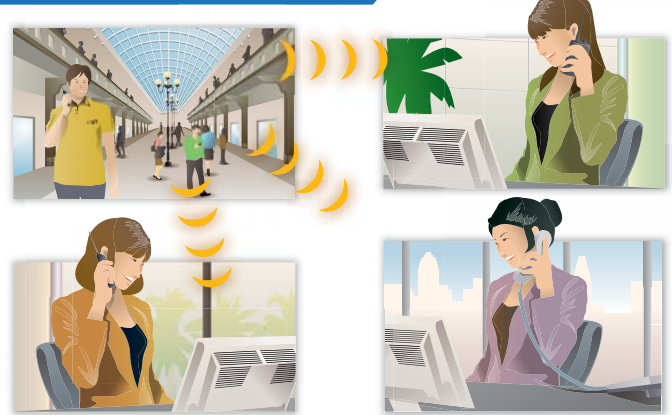
With an optional earphone-mic or headset HS-102 or HS-85, the IP100H user can talk and receive simultaneously like a phone call. Hands-free operation allows your staff to carry out other tasks at the same time.

## Intra-building Communication



By deploying access points along the IP network, the IP advanced radio system can communicate all the way from the basement to the top floor. The IP100H can access the nearest access point and can roam between access points\*. \*Same SSIDs are required for roaming use.

## Dispersed Sites Communication



If connected over an Internet VPN, the IP100H/IP100FS can communicate between dispersed sites such as offices or shops in different cities.

### Application examples

Hotels

Warehouse / Manufacturing

Hospitals

Security

Restaurant / Drive Thru

Supermarkets / Retail Shops

### IP Communication Terminal **IP100H**

- IPX7 waterproof (1m depth water for 30 minutes) for outdoor work or places prone to get wet.
- Compact 58x95x26.4 mm body and 205g (approximate) lightweight.
- Vibration alert function for incoming calls.



\*The IP100H can be used with an internal antenna. (Communication range will decrease to half from/to access points.)



### Wireless LAN Access Point **AP-90M**

- IEEE 802.11 a/b/g/n/ac compliant
- PoE (Power over Ethernet) capability
- Optional RS-AP3, Access point management software



### Remote Communicator **IP100FS**

(Supplied with USB flash drive for use as a USB hardware key)

- The IP100FS can communicate with IP communication terminals from a PC.
- The IP100FS can obtain location information of each IP100H based on the access point being used.
- Can be installed on a Windows® based tablet PC as well as a laptop PC.



### Controller **IP1000C**

- The IP1000C controls all terminal configurations and voice traffic.
- Capable of controlling up to 100 or 20\* terminals (including IP100FS).
- Links up to 11 IP1000Cs over an IP network (Internet VPN) and increases the number of usable IP100H/IP100FS communication terminals to 1100 units.



\* Depending on the IP1000C version.



## Full-duplex Communication

With an optional earphone-mic or headset HS-102 or HS-85, the IP100H can talk and receive at the same time. All users in the system can communicate simultaneously.

## High Security

The wireless LAN security protocols (WPA-PSK (TKIP/AES), WPA2-PSK (TKIP/AES)) encrypt your private conversations.

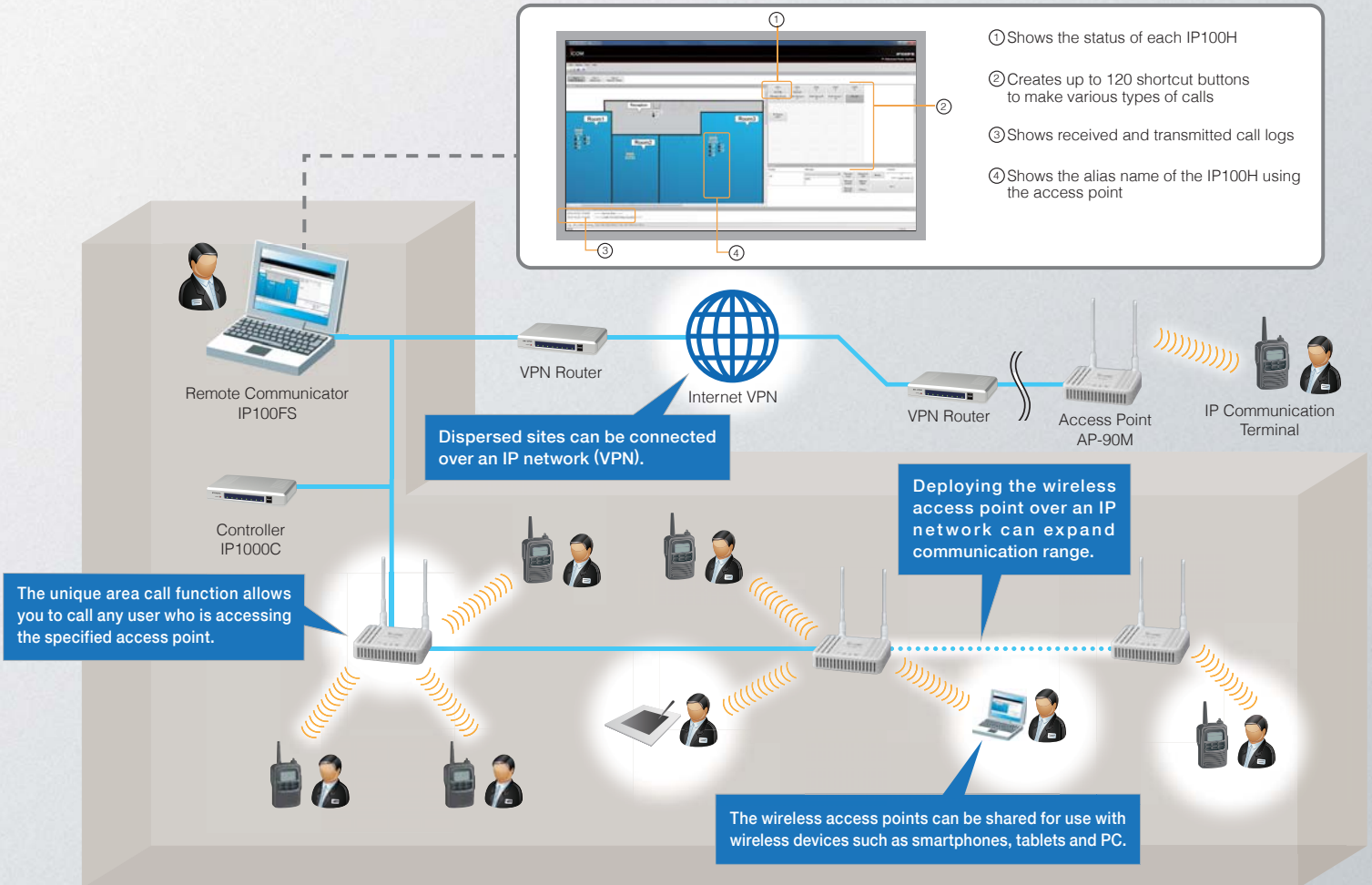
## Status and Short Data Messaging

The IP100H/IP100FS can send status and short data messages\* to other users.

\* The IP100H can send only preprogrammed messages.

## Easy System to Set Up and Use

The IP1000C programs almost all terminal configurations over the air. Individual PC programming via cable connection is not required. (Except initial setup)



## RoIP GATEWAY

### IP Phone and Transceiver Interconnection

With a VE-PG3 RoIP gateway, the IP advanced radio system can interconnect with an IP phone, analogue transceiver and IDAS™ NXDN™ digital transceiver.\*1

When used with an IP phone system, the IP100H can be used as a phone handset for making internal or external calls.\*2

\*1 NXDN™ Type-D multi-site trunking and conventional system using the IC-FR5000 series.

\*2 For interconnection with other equipment, verification tests are required before the installation. The IP100H can call a preprogrammed phone number only. (Cannot manually enter phone numbers to make a call.)



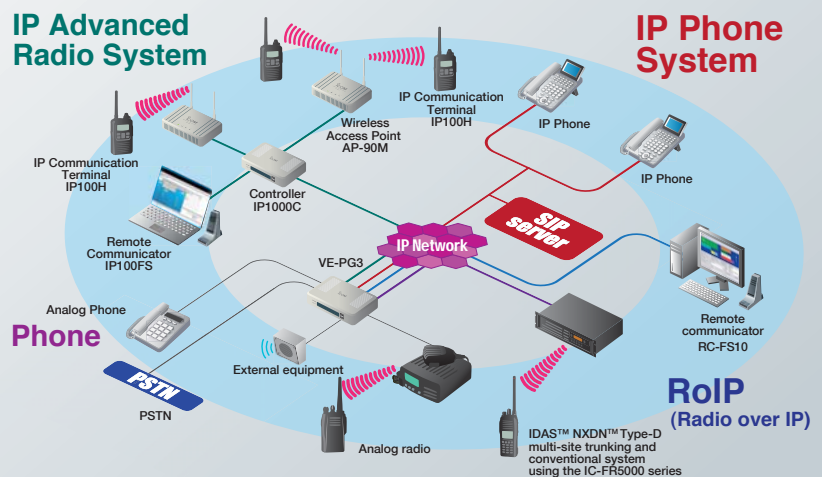
RoIP Gateway  
**VE-PG3**

### Interconnection image

The IP communication terminals, radios and telephones can communicate with each other within the doughnut shaped blue ring.

### IP Advanced Radio System

### IP Phone System



# IP ADVANCED RADIO SYSTEM

## SPECIFICATIONS

### IP100H

Wireless standards	IEEE 802.11 a/b/g/n
Frequency range	2.412-2.472GHz, 5.18-5.35, 5.47-5.70GHz
Dimensions (WxHxD) <sup>1</sup>	58x95x26.4mm; 2.28x3.74x1.04in (with BP-271)
Weight (approx.)	205g; 7.2oz (with BP-271 and antenna)
Operating time <sup>2</sup>	More than 20 hours (with BP-271)
RF output power	Less than 10mW/MHz
Voice Codec	G.711 $\mu$ -law (64kbps)
AF output power (10% distortion)	Internal SP 400mW (typ., 16 $\Omega$ ), External SP 200mW (typ., 8 $\Omega$ )
Operating temperature	WEP (64/128-bit), WPA-PSK (TKIP/AES), WPA2-PSK (TKIP/AES)
Security	-10°C to +60°C; +14°F to +140°F

<sup>1</sup> Projections are not included. <sup>2</sup> Tx: Rx: Stand-by=1:1:8 duty cycle

#### Supplied accessories

- BP-271 Li-ion battery pack
- MB-127 belt clip
- Hand strap
- Antenna
- Antenna cap

### IP100FS (System requirements)

Operating system	Windows® 8/Windows® 8.1 (32-bit/64-bit) Windows® 7 (32-bit/64-bit) SP1 or later, Windows Vista® (32-bit/64-bit) SP2 or later, Windows XP (32-bit) SP3 (64-bit) SP2 or later (Except for Windows® RT)
CPU	Intel® Core™ 2 Duo Processor E6600/ 2.4GHz or better
Memory	2GB or higher
Hard disk space	1GB of disk space (for saving log files)
Audio	DirectSound compatible audio (Frequency response up to 20kHz, sampling rate 48kHz)
Display resolution	1920x1080 pixel recommended 1024x768 pixel minimum
Other	USB 2.0 port, 10Mbps or faster Ethernet interface, speaker, microphone or headset

### IP1000C

Power supply	100-240V AC (With supplied AC adapter)
Operating temperature	0°C to +40°C; +32°F to +104°F
Dimensions (WxHxD) <sup>3</sup>	232x38x168mm; 9.13x1.5x6.61in
Weight (approx.)	750g; 1.65lb (Main unit only)
LAN	RJ-45 connector x 4 1000BASE-T/100BASE-TX/10BASE-T (Auto MDI/MDI-X)
USB	Standard A receptacles x2
Maintenance console	RS-232C (RJ-11) connector

<sup>3</sup> Projections are not included.

#### Supplied accessories

- BC-207S AC adapter
- Cushion sheets
- Ferrite core

### AP-90M

Power supply	12V DC $\pm$ 10% or PoE (IEEE802.3af compatible)
Dimensions (WxHxD) <sup>4</sup>	120x29x103mm; 4.72x1.14x4.06in
Weight (approx.)	300g; 10.6oz (Main unit only)
Wired LAN	RJ-45 connector x 1 1000BASE-T/100BASE-TX/10BASE-T (Auto MDI/MDI-X)
Wireless LAN	IEEE 802.11 a/b/g/n/ac
USB	Standard A receptacle
Security	WEP (64/128/152-bit), WPA, WPA2, WPA-PSK, WPA2-PSK
Operating temperature	0°C to +40°C; +32°F to +140°F

<sup>4</sup> Projections are not included.

#### Supplied accessories

- Mounting bracket

All stated specifications are subject to change without notice or obligation.

## OPTIONS

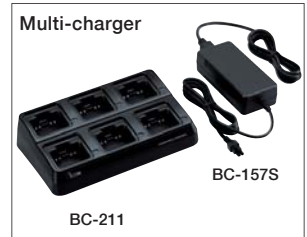
### For IP100H



**BP-271** Li-ion 1150/1200mAh (min./typ.)  
**BP-272** Li-ion 1880/2000mAh (min./typ.)  
**BP-273** LR6 (AA) batteries x3



**BC-202** **BC-123S\***  
\*BC-123SA for 120V AC, SE for 230V AC.



**BC-211** **BC-157S**



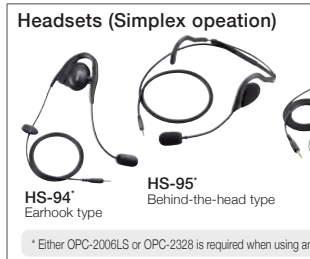
**HS-102** Earphone type, OPC-2359 is required.  
**HS-85** Over-the-head type, OPC-2144 is required.



**HM-153LS** **HM-166LS**  
Use HM-153LS or HM-166LS for full-duplex operation also.



**HM-186LS**



**HS-94\*** Earhook type  
**HS-95\*** Behind-the-head type  
**HS-97\*** Throat type  
\*Either OPC-2006LS or OPC-2328 is required when using any of these headsets.

- **MB-127:** Belt Clip. Same as supplied.
- **OPC-2144:** Slim L-Type plug adapter cable. Required when using either HS-85, HM-153, HM-166 or SP-13.
- **OPC-2006LS:** Plug adapter cable
- **OPC-2328:** PTT switch cable  
Either OPC-2006LS or OPC-2328 is required when using any of HS-94, HS-95 or HS-97.
- **OPC-2359:** PTT switch cable  
OPC-2359 is required when using HS-102.
- **OPC-478UC + OPC-2144:** Setup cables. Both cables are required for initial setup.

### For IP100FS



**CT-23**



**SM-26**



**HM-152**

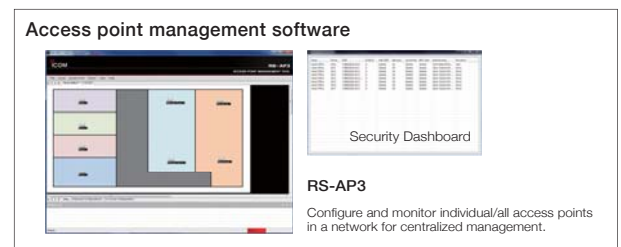


**OPC-1402**

### For AP-90M



**BC-2165S\***  
\*BC-216SA for 120V AC, SE for 230V AC.



**RS-AP3**  
Configure and monitor individual/all access points in a network for centralized management.

Icom, Icom Inc. and the Icom logo are registered trademarks of Icom Incorporated (Japan) in the United States, the United Kingdom, Germany, France, Spain, Russia, Japan and/or other countries. IDAS and IDAS logo are trademarks of Icom Incorporated. NXDN is a trademark of Icom Incorporated and JVC KENWOOD Corporation. Windows and Windows Vista are either registered trademarks or trademarks of Microsoft Corporation in the United States and/or other countries. All other trademarks are the properties of their respective holders.

## Icom Inc.

1-1-32, Kami-minami, Hirano-Ku, Osaka 547-0003, Japan Phone: +81 (06) 6793 5302 Fax: +81 (06) 6793 0013

[www.icom.co.jp/world](http://www.icom.co.jp/world)

## Count on us!

### Icom America Inc.

12421 Willows Road NE,  
Kirkland, WA 98034, U.S.A.  
Phone: +1 (425) 454-8155  
Fax: +1 (425) 454-1509  
E-mail: [sales@icomamerica.com](mailto:sales@icomamerica.com)  
URL: <http://www.icomamerica.com>

### Icom (Europe) GmbH

Communication Equipment  
Auf der Krautweide 24  
65812 Bad Soden am Taunus, Germany  
Phone: +49 (6198) 76685-0  
Fax: +49 (6198) 76685-50  
E-mail: [info@icomeurope.com](mailto:info@icomeurope.com)  
URL: <http://www.icomeurope.com>

### Icom France s.a.s.

Zac de la Plaine,  
1 Rue Brindejonc des Moulinais, BP 45804,  
31505 Toulouse Cedex 5, France  
Phone: +33 (5) 61 36 03 03  
Fax: +33 (5) 61 36 03 00  
E-mail: [icom@icom-france.com](mailto:icom@icom-france.com)  
URL: <http://www.icom-france.com>

### Asia Icom Inc.

6F No. 68, Sec. 1 Cheng-Teh Road,  
Taipei, Taiwan, R.O.C.  
Phone: +886 (02) 2559 1899  
Fax: +886 (02) 2559 1874  
E-mail: [sales@asia-icom.com](mailto:sales@asia-icom.com)  
URL: <http://www.asia-icom.com>

Your local distributor/dealer:

### Icom Canada

Glenwood Centre #150-6165  
Highway 17A, Delta, B.C.,  
V4K 5B8, Canada  
Phone: +1 (604) 952-4266  
Fax: +1 (604) 952-0090  
E-mail: [info@icomcanada.com](mailto:info@icomcanada.com)  
URL: <http://www.icomcanada.com>

### Icom Spain S.L.

Ctra. Rubi, No. 88 "Edificio Can Castanyer"  
Bajos A 08174, Sant Cugat del Valles,  
Barcelona, Spain  
Phone: +34 (93) 590 26 70  
Fax: +34 (93) 589 04 46  
E-mail: [icom@icomspain.com](mailto:icom@icomspain.com)  
URL: <http://www.icomspain.com>

### Icom (Australia) Pty. Ltd.

Unit 1 / 103 Garden Road,  
Clayton, VIC 3168 Australia  
Phone: +61 (03) 9549 7500  
Fax: +61 (03) 9549 7505  
E-mail: [sales@icom.net.au](mailto:sales@icom.net.au)  
URL: <http://www.icom.net.au>

### Icom Brazil

Rua Itororó, 444 Padre Eustáquio  
Belo Horizonte MG,  
CEP: 30720-450, Brazil  
Phone: +55 (31) 3582 8847  
Fax: +55 (31) 3582 8987  
E-mail: [sales@icombrasil.com](mailto:sales@icombrasil.com)

### Icom (UK) Ltd.

Blacksloe House, Altira Park,  
Herne Bay, Kent, CT16 6GZ, U.K.  
Phone: +44 (0) 1227 741741  
Fax: +44 (0) 1227 741742  
E-mail: [info@icomuk.co.uk](mailto:info@icomuk.co.uk)  
URL: <http://www.icomuk.co.uk>

### Icom New Zealand

39C Rennie Drive, Airport Oaks,  
Auckland, New Zealand  
Phone: +64 (09) 274 4062  
Fax: +64 (09) 274 4708  
E-mail: [inquiries@icom.co.nz](mailto:inquiries@icom.co.nz)  
URL: <http://www.icom.co.nz>