

IMPORTANT

READ ALL INSTRUCTIONS carefully and completely before using the IP100FS.

SAVE THESE INSTRUCTIONS — These instructions contain important safety and operating instructions for the IP100FS.

PRECAUTIONS

⚠ **WARNING! NEVER** disassemble, modify or repair the IP100FS USB flash drive. This may result in an electrical shock, cause a fire or damage the drive.

⚠ **WARNING! NEVER** operate or touch the IP100FS USB flash drive with wet hands. This may result in an electrical shock or damage the drive.

OPERATION NOTE

- Ensure that your PC supports USB port(s) operation by confirming the Universal Serial Bus controller is in the PC's Device Manager.
- We recommend that you insert the IP100FS USB flash drive to the PC's USB port. Connecting it through a hub may damage the drive or make it work improperly.
- When operating the PC or external devices, see their instruction manuals for operational details.

INSTALLATION NOTE

The displayed dialogue boxes, indications or operations may differ slightly, depending on your system settings, type of OS and its service pack* level.

* In this leaflet, service pack is written as SP from further on.

The IP100FS IP ADVANCED RADIO SYSTEM REMOTE COMMUNICATOR allows you to remotely communicate with WLAN transceivers connected to your IP1000C from a PC through IP networks.

EXPLICIT DEFINITIONS

WORD	DEFINITION
⚠ WARNING!	Personal injury, fire hazard or electric shock may occur.
CAUTION	Equipment damage may occur.
NOTE	If disregarded, inconvenience only. No risk of personal injury, fire or electric shock.

CAUTION: DO NOT place the IP100FS USB flash drive in direct sunlight. This could damage the IP100FS drive.

CAUTION: DO NOT use harsh solvents such as benzene or alcohol to clean the IP100FS USB flash drive, as they can damage the drive's surfaces. If the USB flash drive becomes dusty or dirty, wipe it clean with a dry, soft cloth.

Always place the IP100FS USB flash drive in a secure place to avoid inadvertent use by children.

FCC INFORMATION

CAUTION: Any changes or modifications not expressly approved by Icom Inc., could void your authority to operate the equipment under FCC regulations.

FOR CLASS B UNINTENTIONAL RADIATORS:

This equipment has been tested and found to comply with the limits for a Class B digital device, pursuant to part 15 of the FCC Rules. These limits are designed to provide reasonable protection against harmful interference in a residential installation. This equipment generates, uses and can radiate radio frequency energy and, if not installed and used in accordance with the instructions, may cause harmful interference to radio communications. However, there is no guarantee that interference will not occur in a particular installation. If this equipment does cause harmful interference to radio or television reception, which can be determined by turning the equipment off and on, the user is encouraged to try to correct the interference by one or more of the following measures:

- Reorient or relocate the receiving antenna.
- Increase the separation between the equipment and receiver.
- Connect the equipment into an outlet on a circuit different from that to which the receiver is connected.
- Consult the dealer or an experienced radio/TV technician for help.

1. BEFORE STARTING THE IP100FS

Follow the instructions and install the IP100FS dispatching software. The IP100FS USB flash drive must also be inserted into the PC every time you start up the IP100FS dispatching software.

- To operate the software, refer to the IP100FS Help file.
- Purchase a speaker, headset or a microphone (See options below) to meet your needs.

System requirements

(As of January 2014)

◇ PC

CPU Clock..... Intel® Core™2 Duo Processor E6600/2.40 GHz, equivalent or faster
 System memory .. 2 GB or more
 Monitor Full HD (1920 x 1080) recommended
 At least XGA (1024 x 768)
 Sound card..... For sounding alarms
 Speaker..... For sounding alarms
 LAN 100BASE-TX or faster

Other:

USB 1.1 or 2.0
 Hard disk At least 1 GB of free space.

/// NOTE:

DO NOT install more than 2 LAN cards in the PC.

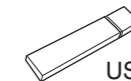
◇ Operating System

Microsoft® Windows® 8 (Except for Windows RT)
 Microsoft® Windows® 7 (SP1 or later)
 Microsoft® Windows Vista® (SP2 or later)
 Microsoft® Windows® XP (32 bit: SP3 or later)
 (64 bit: SP2 or later)

- The IP100FS can be used with both 32 and 64 bit versions of the operating systems listed above.

USB flash drive and its files

The USB drive contains the IP100FS and its installer.



USB flash drive

- “REMOVABLE” and “CD Drive ICOM” windows appear when the USB flash drive is attached to the PC.

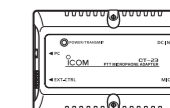
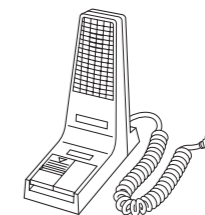
/// **DO NOT** restart or shutdown the PC with the USB flash drive attached to it. This may be the cause of data loss and malfunctions. **ALWAYS** remove the flash drive from the PC before restarting or shutting down the PC.

PC Standby mode

Depending on the PC, the software may not operate properly after returning from the standby mode. If this occurs, turn OFF your PC's standby mode.

Options

SM-25 DESKTOP MICROPHONE CT-23* PTT MICROPHONE ADAPTER



* CT-23 is necessary when you connect the SM-25 and the PC.

Note on the CT-23:

The CT-23 audio communication contains a high pitched tone that most people cannot hear. However, if you do hear it, lower the PC's audio volume.

About the IP100FS Help file:

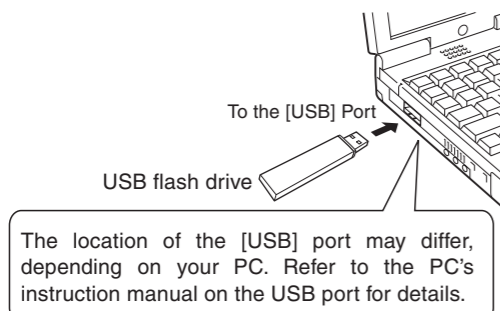
Please refer to the Help file of the software for assistance with the functions or settings.
 To open the Help file, click “Help” in the Menu Bar of the software and select “Help”, or simply push the [F1] key on the PC's keyboard.

2. INSTALLING THE IP100FS

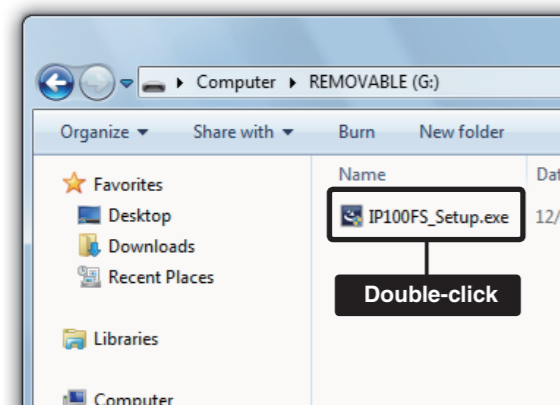
These Instructions are based on using Windows 7.

- 1 • Make sure Windows has completed its start-up, and no other applications are running.
• Make sure you are logged in as the administrator.

- 2 Insert the USB flash drive into the USB port.

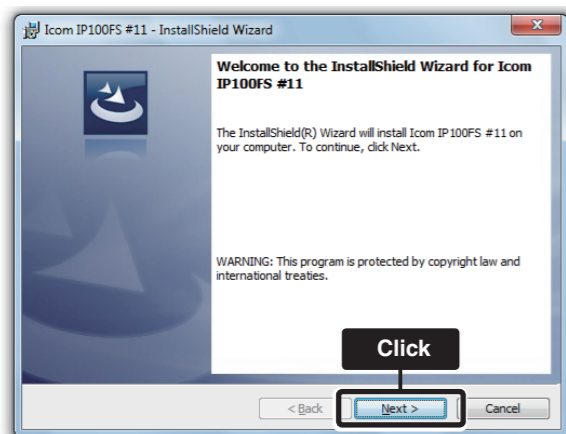


- 3 Double-click "IP100FS_Setup.exe" in the REMOVABLE drive.



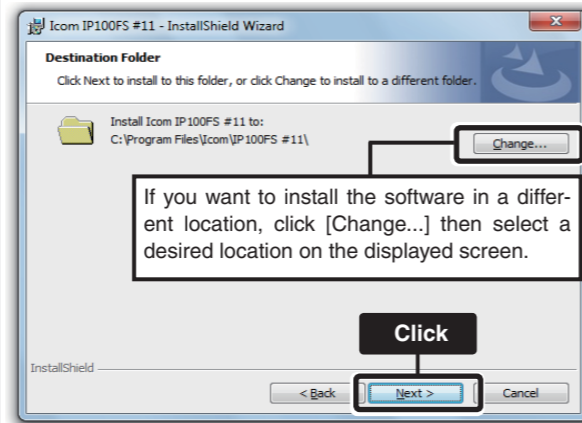
- 4 If the "User Account Control" window appears, click [Yes] to continue.

- 5 Click [Next >].

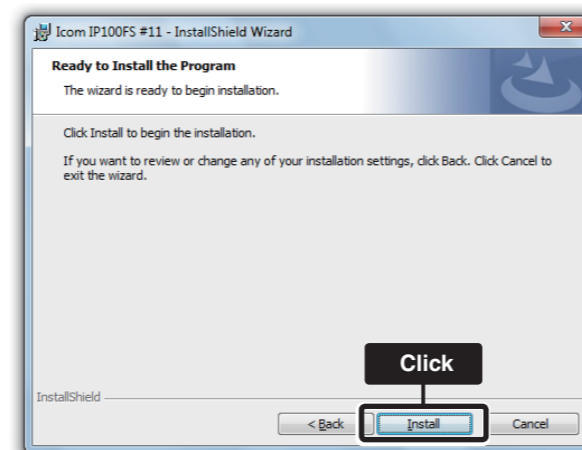


NOTE:
If your PC has already installed the software, the uninstallation or update screen appears.

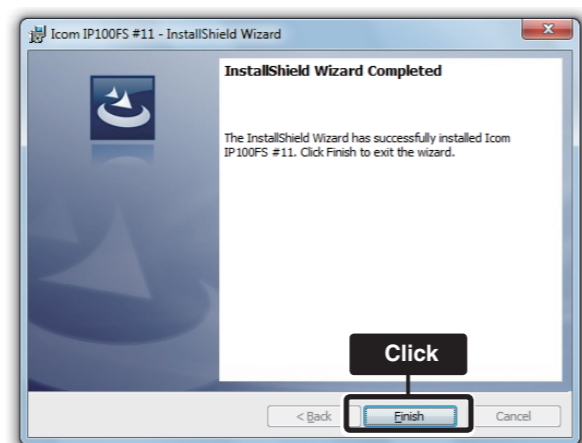
- 6 Click [Next >].



- 7 Click [Install].



- 8 Click [Finish].



3. STARTING THE IP100FS

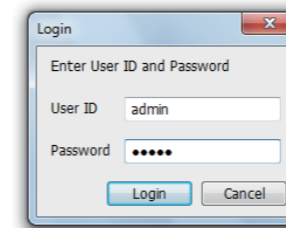
NOTE:

Before starting the IP100FS, connect the speaker, headset or microphone that you are going to use.

- 1 Click the IP100FS icon in the Start menu.
 - You can also start the software by simply double-clicking the IP100FS icon on your desktop.
 - If the "User Account Control" window appears, click [Yes] to continue.

- 2 Click "Option" on the Menu Bar, and then click "Setting..."

- 3 The IP100FS login window appears.
 - The user ID and password listed below are set as default.



To log in as the administrator enter:
User ID admin
Password admin

- 4 Set the sites, destinations and so on on the displayed software screen.
 - Refer to the IP100FS Help file for more details on the settings.

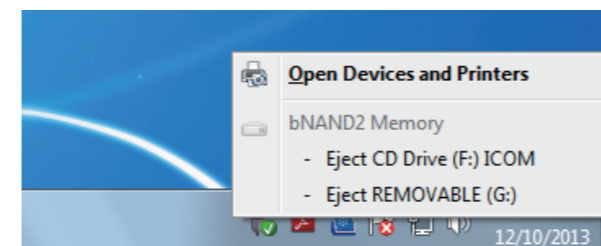
NOTE on the USB flash drive:

- The USB flash drive must be inserted into the USB port when installing and starting the IP100FS.
- Remove the USB flash drive from the USB port before restarting or shutting down the PC, otherwise you may lose your data, or damage the device.
- Remove the USB flash drive from the USB port after completing the site settings.

FURTHER INFORMATION

◇ Removing the USB flash drive

- ① Click the <Safely Remove Hardware and Eject Media> icon in the task tray, and then click <Eject REMOVABLE>, as shown below.



- Refer to your PC's instruction manual if the <Safely Remove Hardware and Eject Media> icon does not appear in your task tray.

- ② Remove the USB flash drive when the <Safe To Remove Hardware> message is displayed.

◇ Uninstalling the IP100FS

Follow the instructions below to uninstall the IP100FS.

- Make sure you are logged in as the administrator.
- ① Click the <Start> button and then click <Control Panel>.
 - ② Click <Uninstall a program>.
 - ③ Right-click <Icom IP100FS #11>, and then click <Uninstall>.
 - ④ Click [Yes] in the uninstallation confirmation dialog.
 - ⑤ If the "User Account Control" dialog appears, click [Yes] to uninstall.

◇ Reinstalling the IP100FS

Once the uninstalling is complete as described above, you can reinstall the IP100FS by following the steps in "2 INSTALLING THE IP100FS."